

Refurbishment of Drum Lifting Device for Radioactive Waste Handling inside Hot Cell Facility

Basiran Basiran, Helmi Fauzi Rahmatullah, R.B Santosa, Mohammed Fauzi and N. Arif Sungkono

Center for Nuclear Fuel Technology (BATAN), Banten, Indonesia
 Corresponding author: Basiran <basyranbashri4557@gmail.com>

Radiometallurgy Installation – BATAN is a post-irradiation examination (PIE) facility for nuclear fuel element and structural components of nuclear reactor. Due to the high radiation exposure of the spent fuel so many test equipment and tools that has been installed inside the hotcell was broken, including Drum Lifting Device (DLD). DLD is a tool to move non-nuclear waste out from inside the hotcell. Therefore it was necessary to be carried out refurbishment of the DLD. Remote decontamination, personel intervention and repairing DLD components were steps to refurbishment of DLD. After that refurbishment, operators can move non-nuclear wastes out easily without contact those directly anymore.

Keywords: refurbishment, DLD (Drum Lifting Device), spent fuel, Hotcell.

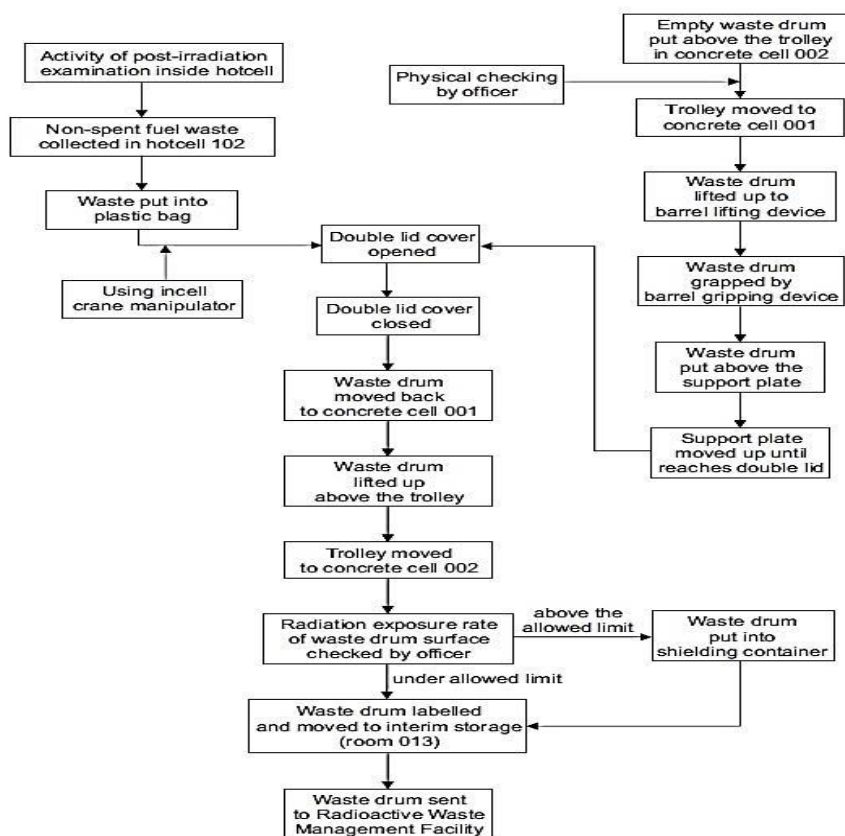


Figure 65: Mechanism of movement of non-nuclear wastes in RMI (Radiometallurgy Installation).