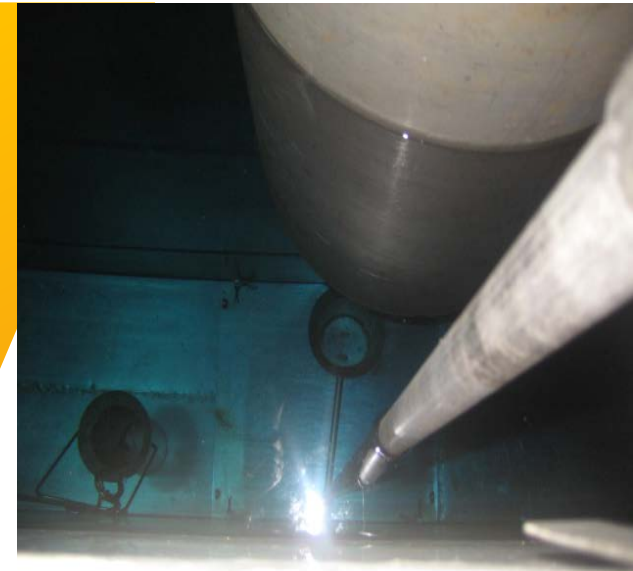


TRANSFER RADIOACTIVE WASTE MATERIAL IN HOTCELL 101 RADIOMETALLURGY VIA TRANSFER CHANNEL TOWARDS INTERIM STORAGE FOR SPENT FUEL



Center For Nuclear Fuel
Technology,
National Nuclear Energy
Agency, Indonesia



**Dadang, Fajar Al Afghani, Rohmad
Sigit, Antonio Gogo, Purwanta, Setia
Permana, Guswardani**

**Hotlab Proceeding 2019 , 9 September 2019,
Mamallapuram, Chennai, India.**

Outline



Introduction

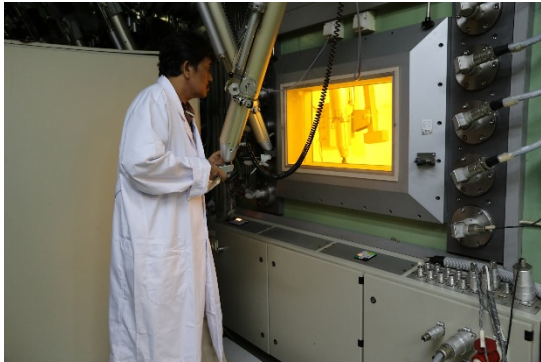


Result and Discussion

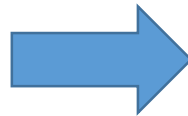


Conclusion

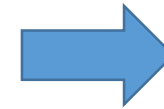
Introduction



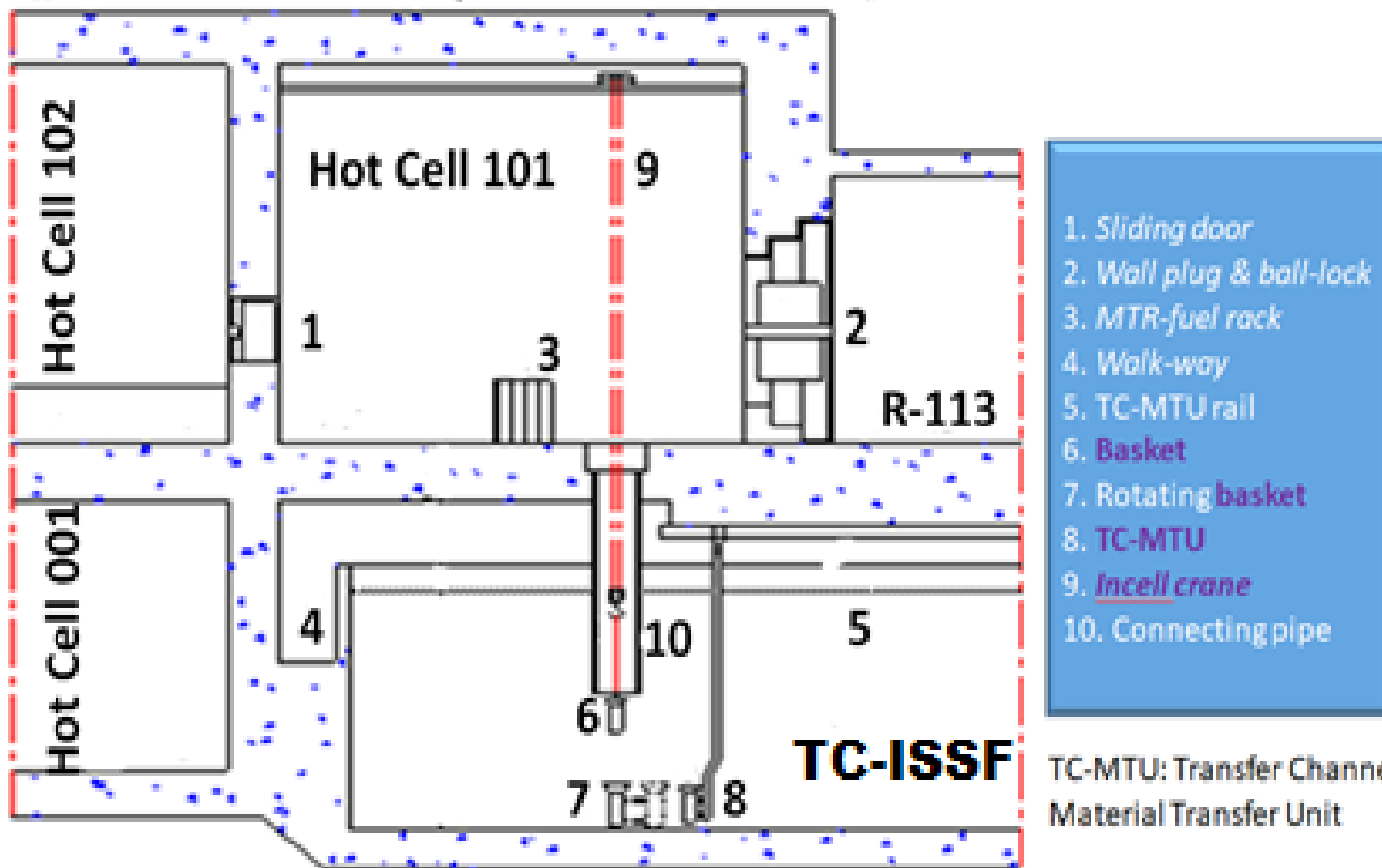
Hotcell
Activity



Produce
Radioactive
Waste



Radioactive
Waste
Management



Hot cell 101 RMI section that is connected to transfer channel of ISSF

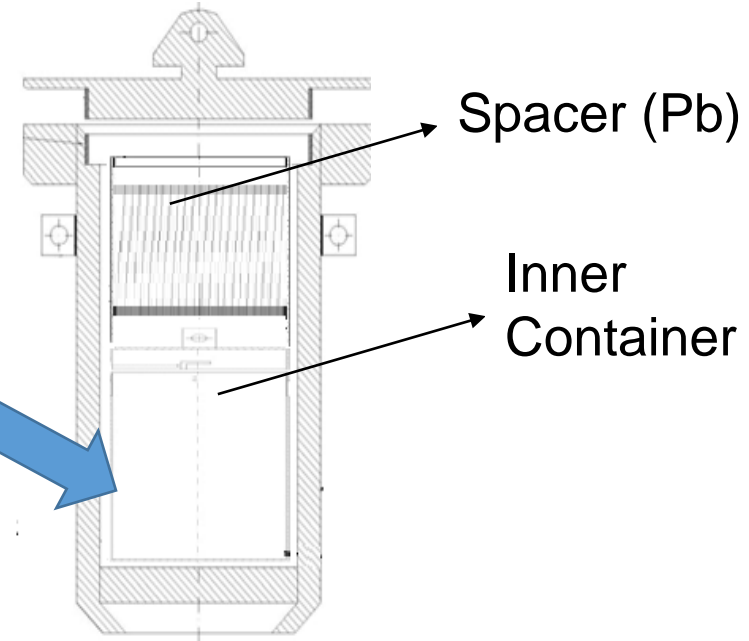
Goal



Share your
EXPERIENCE

A black umbrella icon is positioned above the word "EXPERIENCE". The word "your" is written in a light blue, cursive font, and "EXPERIENCE" is in a bold, dark blue, sans-serif font.

Outer Container



Inner container inside Outer Container



Additional
Shielding

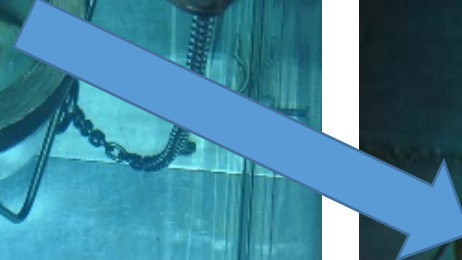
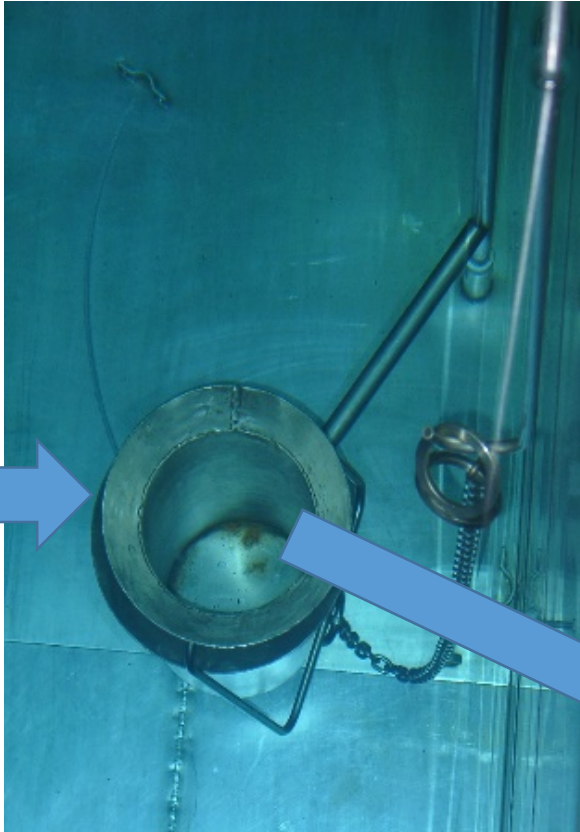


Welding Process of Outer Container at the wall plug hole of hot cell 101

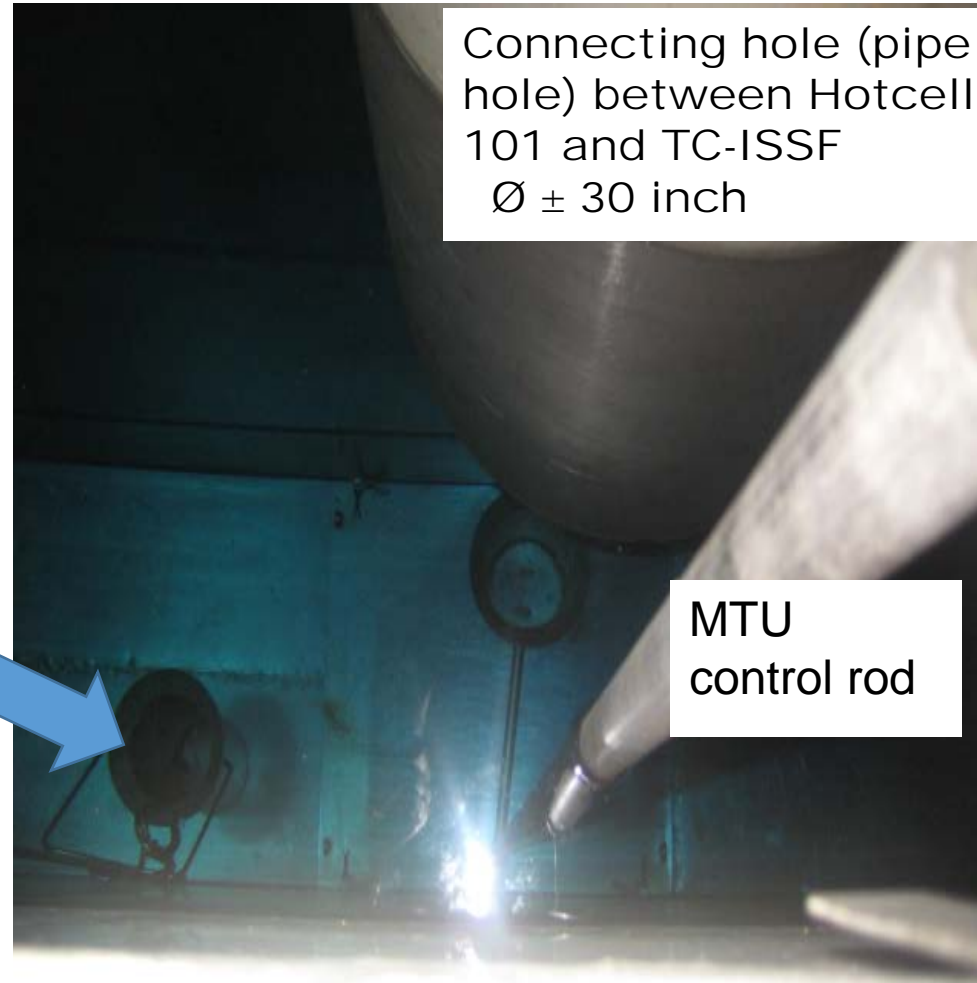


The outer container that has been put in the basket

Basket
MTR-
fuel



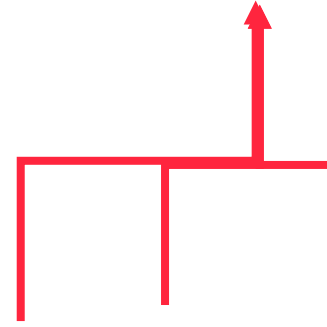
Connecting hole (pipe
hole) between Hotcell
101 and TC-ISSF
 $\text{Ø} \pm 30$ inch



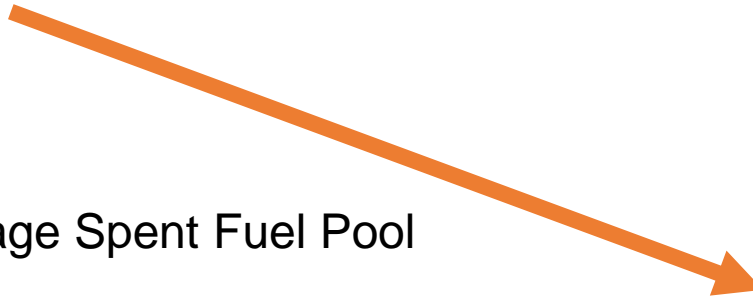
MTU
control rod

MTR-fuel basket and hotcell 101 connecting hole with TC-ISSF

Outer Container Contain
Radioactive Waste



Interim Storage Spent Fuel Pool





CONCLUSION



- The results of the implementation of the transfer of radioactive material from Radio Metallurgy Instalation hot cell 101 through Transfer Channel Interim Storage of Spent Fuel were carried out smoothly, safety and secure. This success is very dependent on:
- Always follow the instruction and direction of the safety division based on the principle of “ALARA”
- Good coordination between Outer Container senders and recipients .
- The experience of the personnel involved, both when preparing, recognizing and operating the functions of the equipment to be used, as well as the knowledge gained from training or coaching shortly before the time of the transfer.

